

## Summary of progress made for increasing prescribing intervals

The Welsh Analytical Prescribing Support Unit (WAPSU), the analytical unit of the All Wales Therapeutics and Toxicology Centre (AWTTC), has developed a dashboard to report on progress in increasing the interval of prescribing durations within primary care in Wales. These data related to a selected basket of medicines which has been agreed by key stakeholders across Wales. This report provides some of the main metrics provided within the dashboard.

**Health Board**  
 Aneurin Bevan
  Betsi Cadwaladr
  Cardiff And Vale
  Cwm Taf Morgannwg
  Hywel Dda
  Powys
  Swansea Bay
  All Wales

**Figure 1 - Quantity per Item and Percentage Change per Health board**

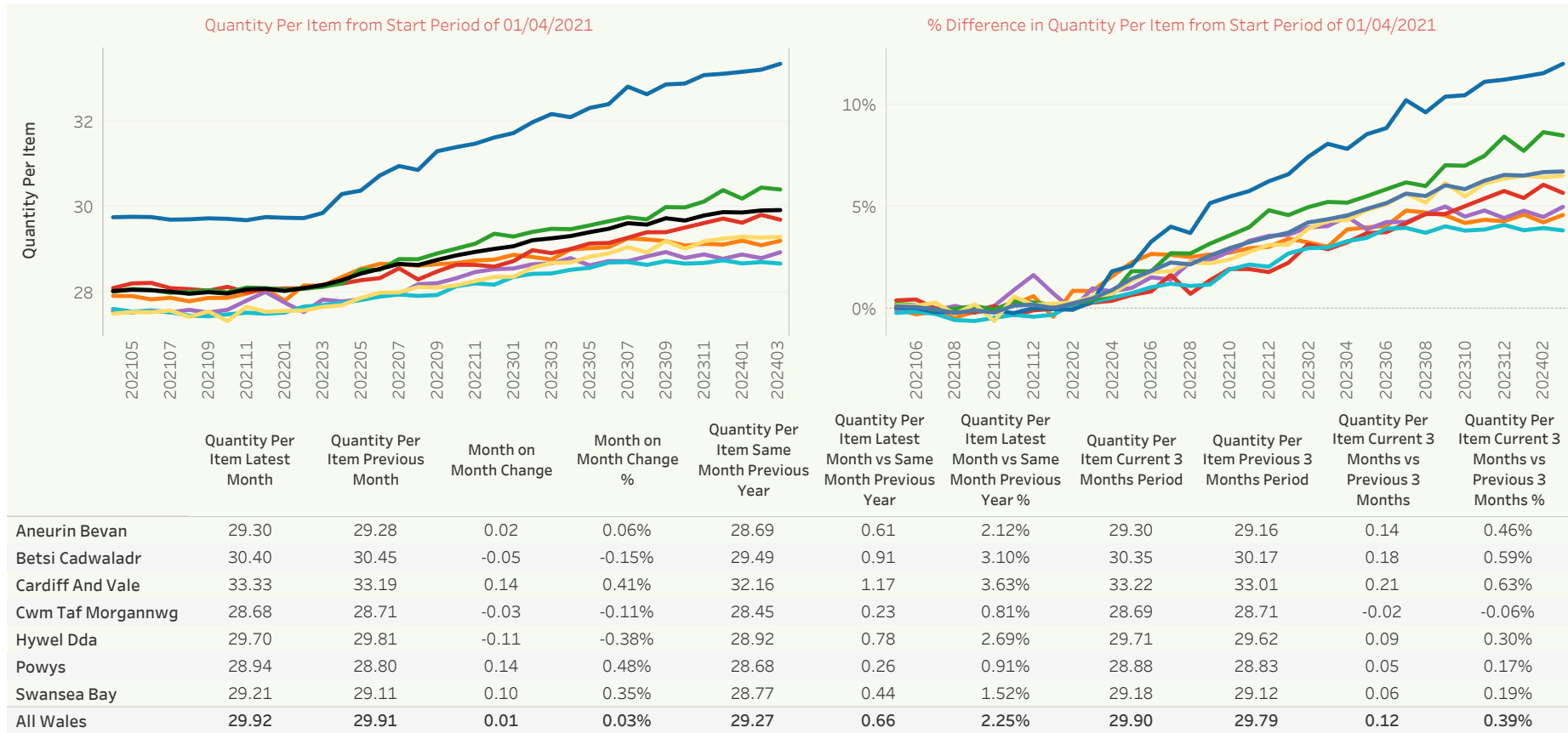


Figure 2 - Breakdown of Quantity Per Item for March 2024 by Cluster

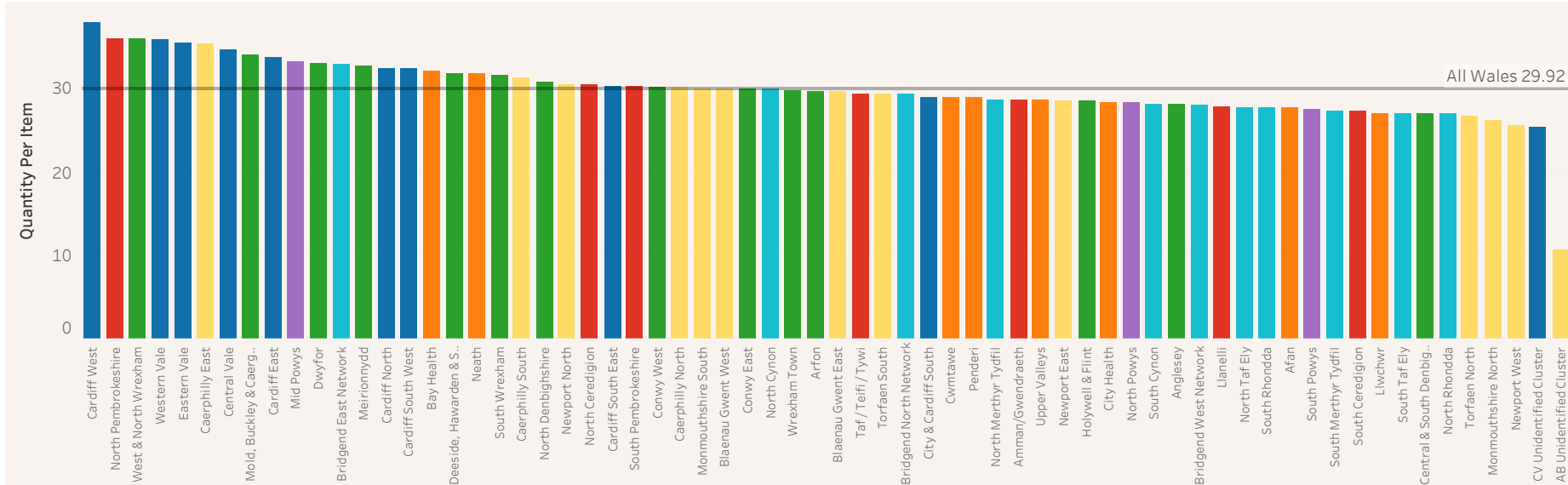
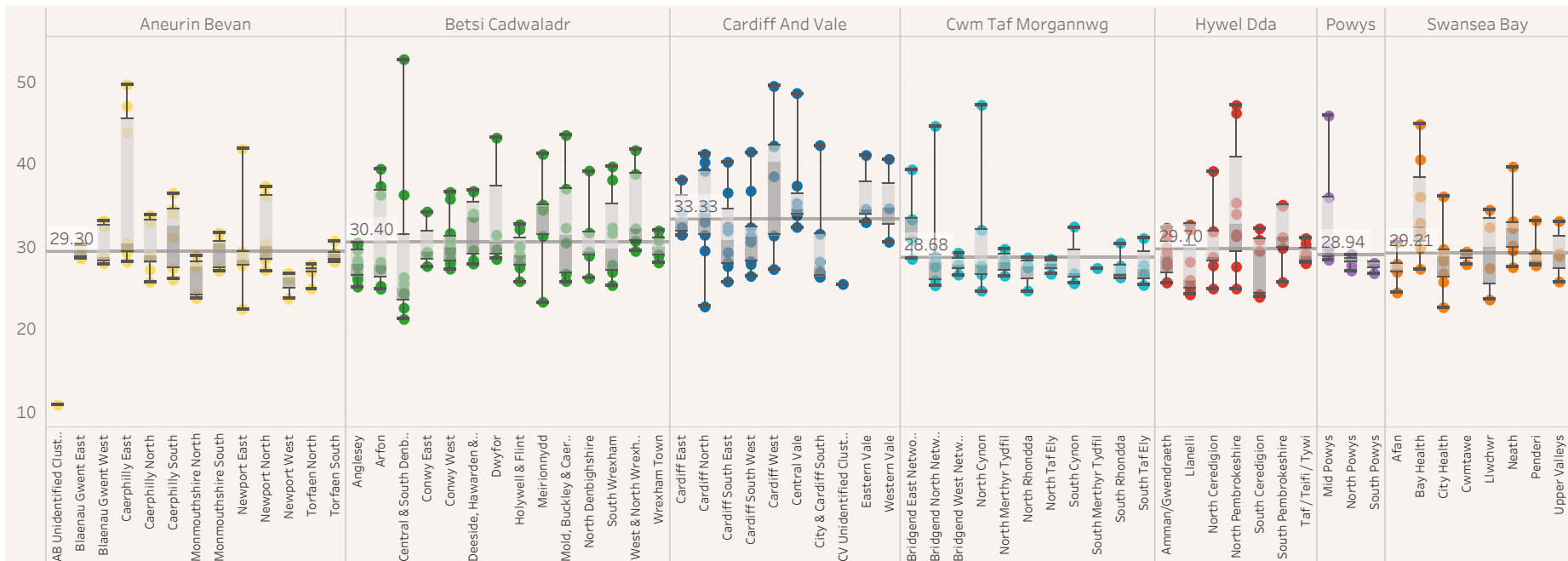


Figure 3 - Breakdown of Quantity Per Item for March 2024 by Cluster and Practice



END OF REPORT