

Summary of progress made for increasing prescribing intervals

The Welsh Analytical Prescribing Support Unit (WAPSU), the analytical unit of the All Wales Therapeutics and Toxicology Centre (AWTTC), has developed a dashboard to report on progress in increasing the interval of prescribing durations within primary care in Wales. These data related to a selected basket of medicines which has been agreed by key stakeholders across Wales. This report provides some of the main metrics provided within the dashboard.

Health Board
 Aneurin Bevan
 Betsi Cadwaladr
 Cardiff And Vale
 Cwm Taf Morgannwg
 Hywel Dda
 Powys
 Swansea Bay
 All Wales

Figure 1 - Quantity per Item and Percentage Change per Health board

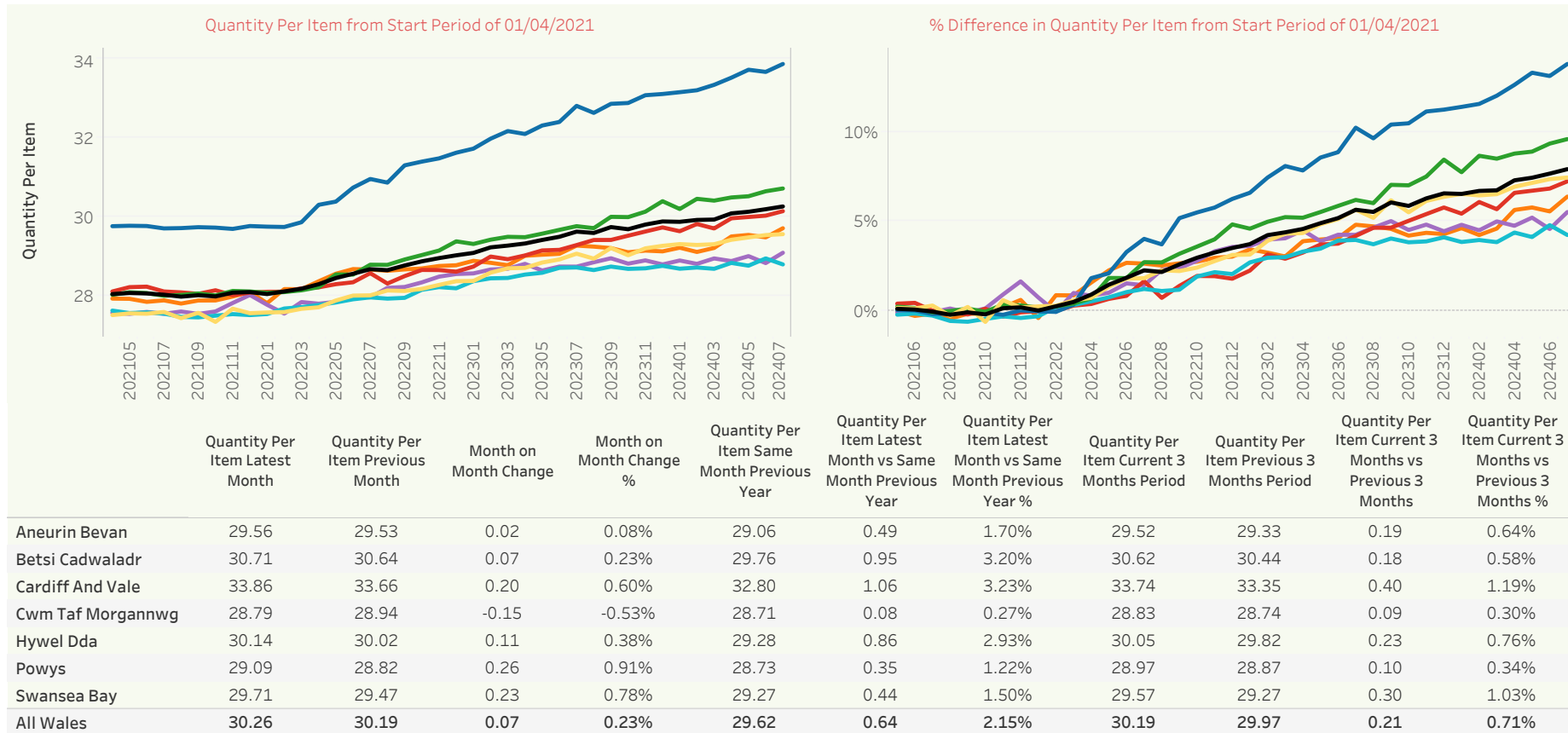


Figure 2 - Breakdown of Quantity Per Item for July 2024 by Cluster

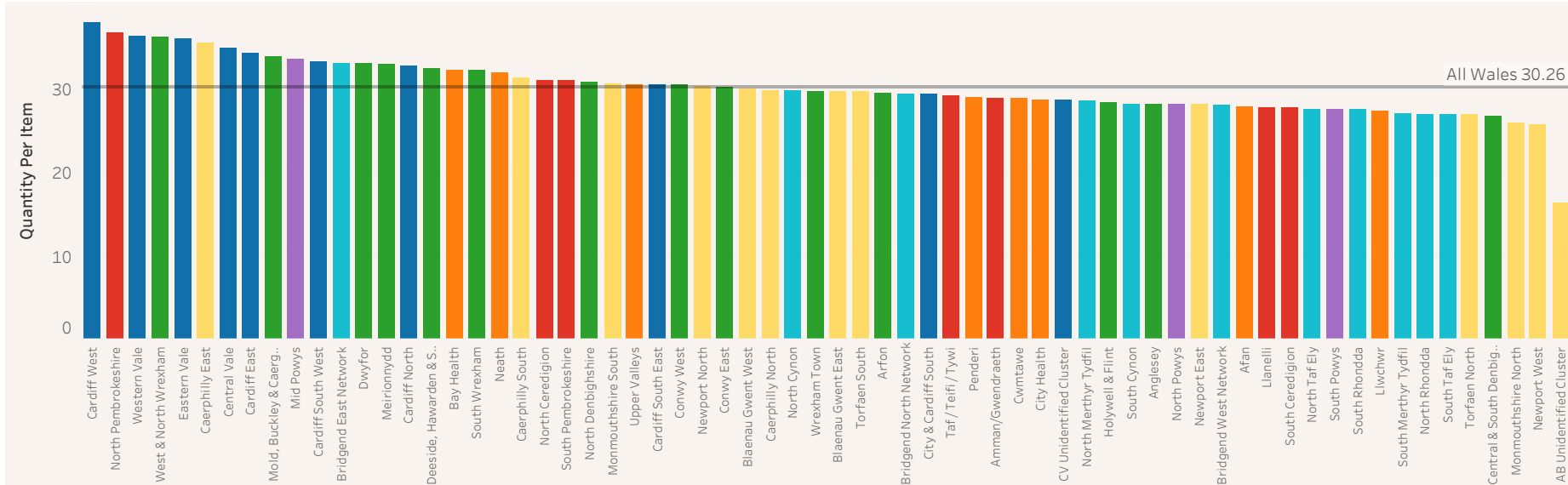
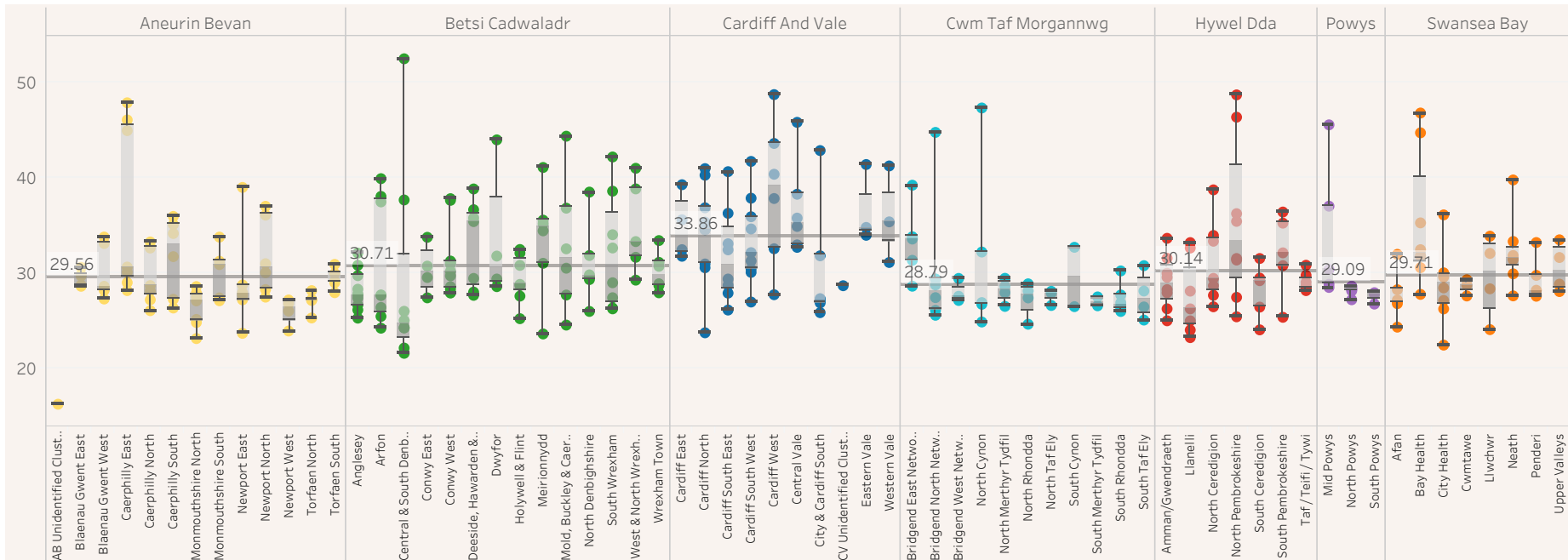


Figure 3 - Breakdown of Quantity Per Item for July 2024 by Cluster and Practice



END OF REPORT