

## Summary of progress made for increasing prescribing intervals

The Welsh Analytical Prescribing Support Unit (WAPSU), the analytical unit of the All Wales Therapeutics and Toxicology Centre (AWTTC), has developed a dashboard to report on progress in increasing the interval of prescribing durations within primary care in Wales. These data related to a selected basket of medicines which has been agreed by key stakeholders across Wales. This report provides some of the main metrics provided within the dashboard.

**Health Board**  
■ Aneurin Bevan   
 ■ Betsi Cadwaladr   
 ■ Cardiff And Vale   
 ■ Cwm Taf Morgannwg   
 ■ Hywel Dda   
 ■ Powys   
 ■ Swansea Bay   
 ■ All Wales

**Figure 1 - Quantity per Item and Percentage Change per Health board**

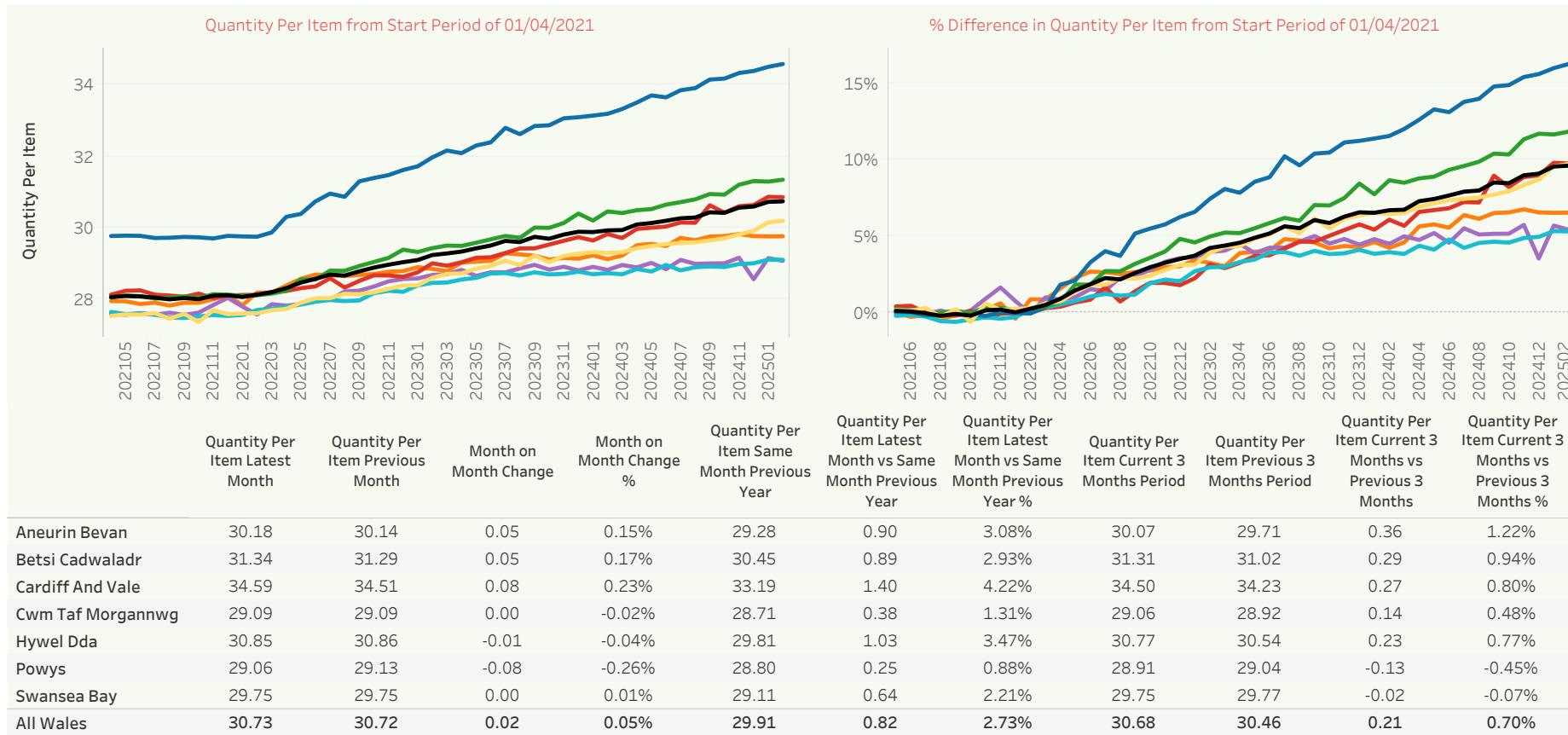


Figure 2 - Breakdown of Quantity Per Item for February 2025 by Cluster

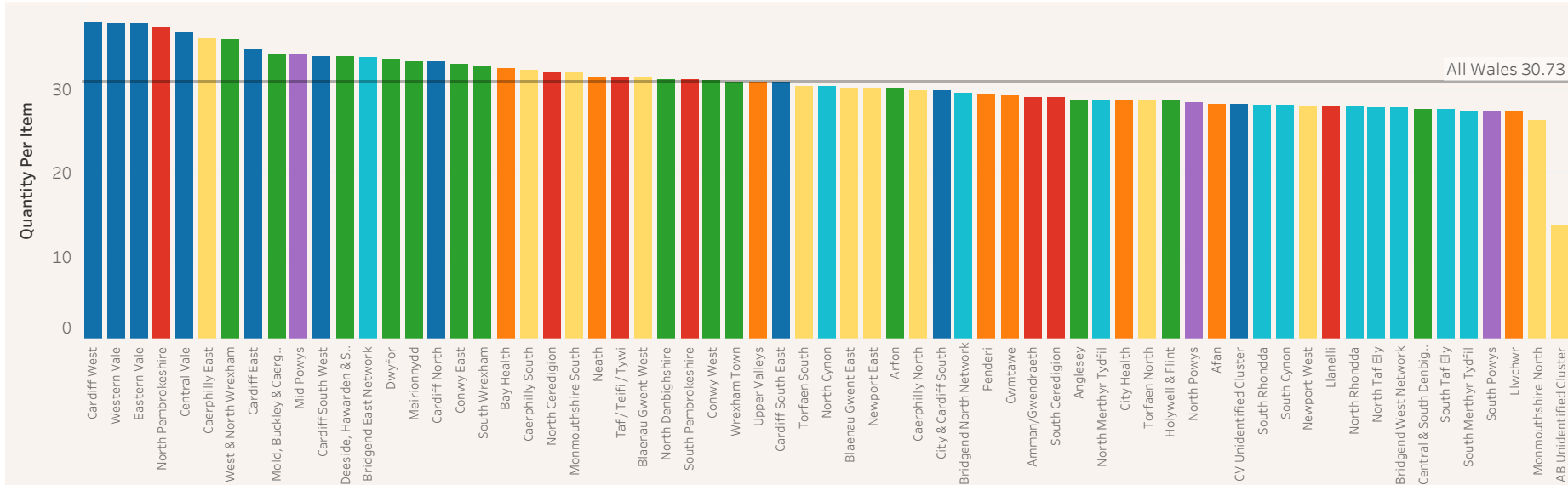
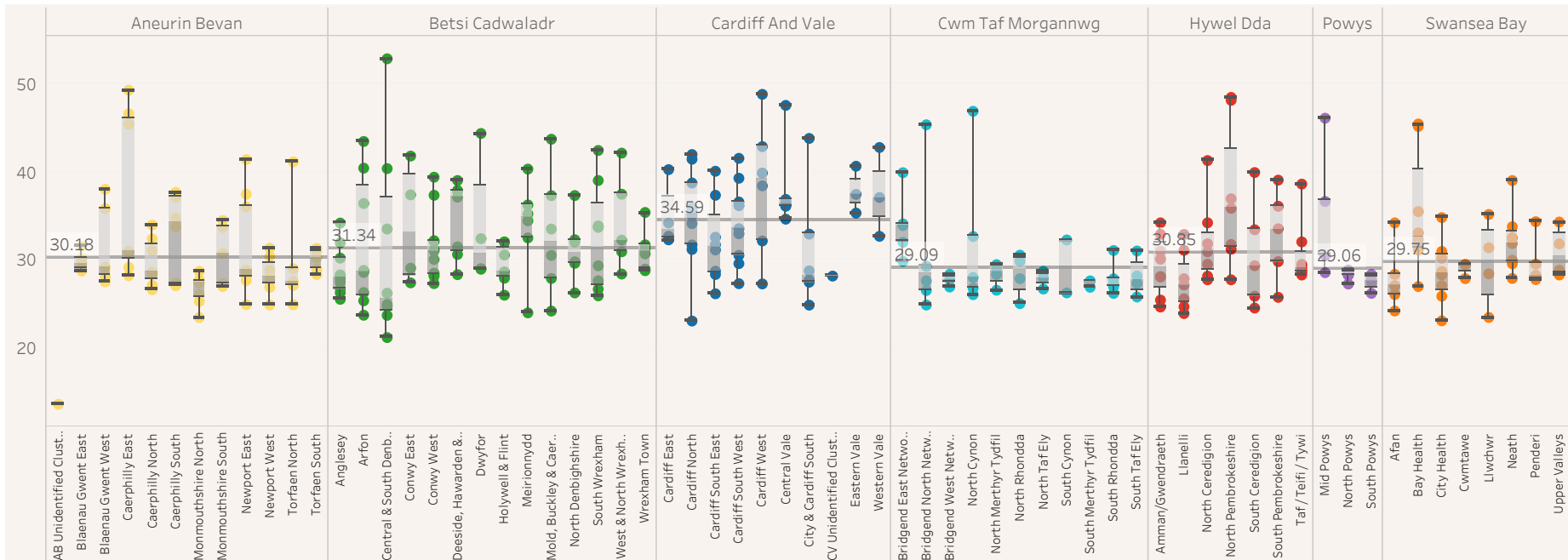


Figure 3 - Breakdown of Quantity Per Item for February 2025 by Cluster and Practice



END OF REPORT