

Summary of progress made for increasing prescribing intervals

The Welsh Analytical Prescribing Support Unit (WAPSU), the analytical unit of the All Wales Therapeutics and Toxicology Centre (AWTTC), has developed a dashboard to report on progress in increasing the interval of prescribing durations within primary care in Wales. These data related to a selected basket of medicines which has been agreed by key stakeholders across Wales. This report provides some of the main metrics provided within the dashboard.

Health Board
■ Aneurin Bevan
 ■ Betsi Cadwaladr
 ■ Cardiff And Vale
 ■ Cwm Taf Morgannwg
 ■ Hywel Dda
 ■ Powys
 ■ Swansea Bay
 ■ All Wales

Figure 1 - Quantity per Item and Percentage Change per Health board

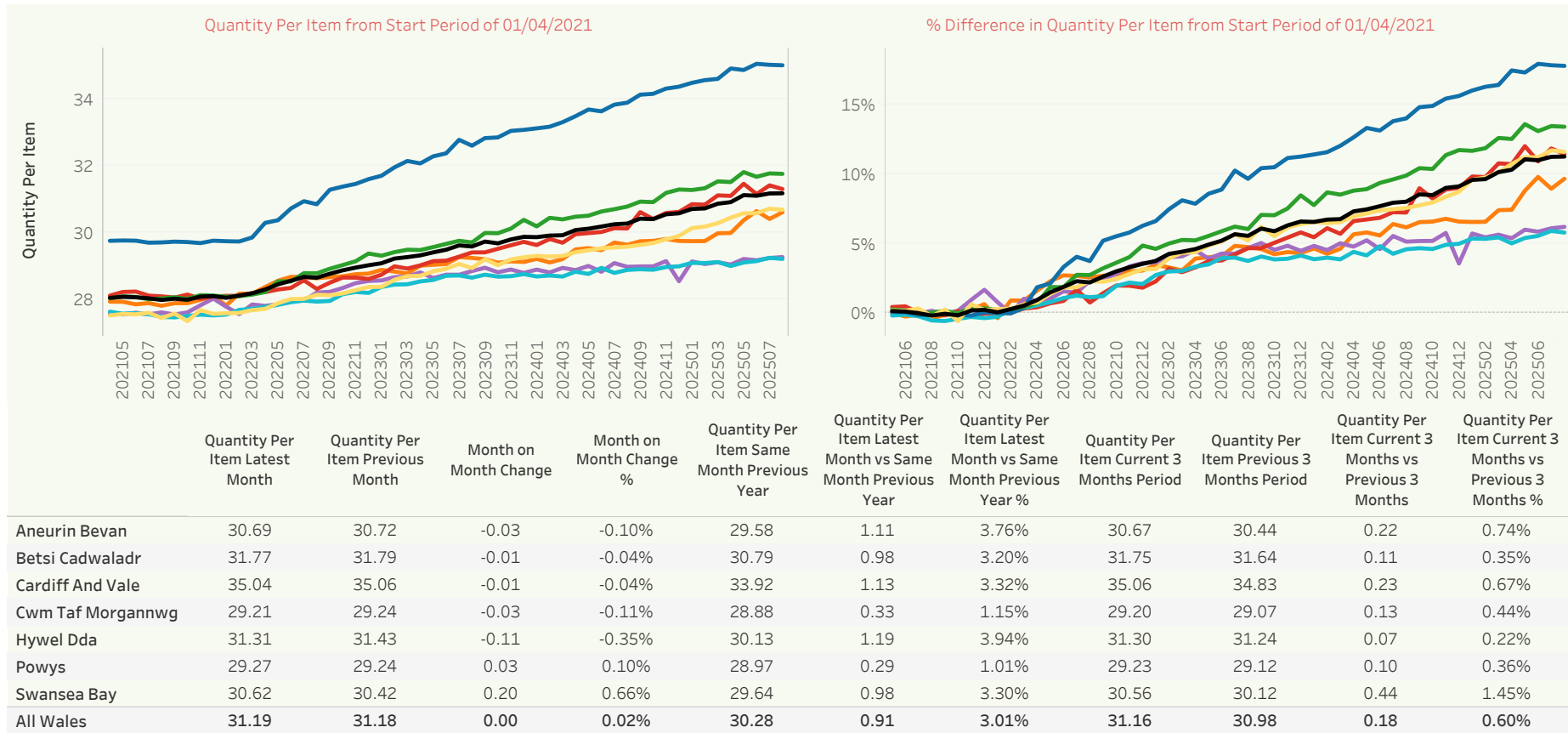


Figure 2 - Breakdown of Quantity Per Item for August 2025 by Cluster

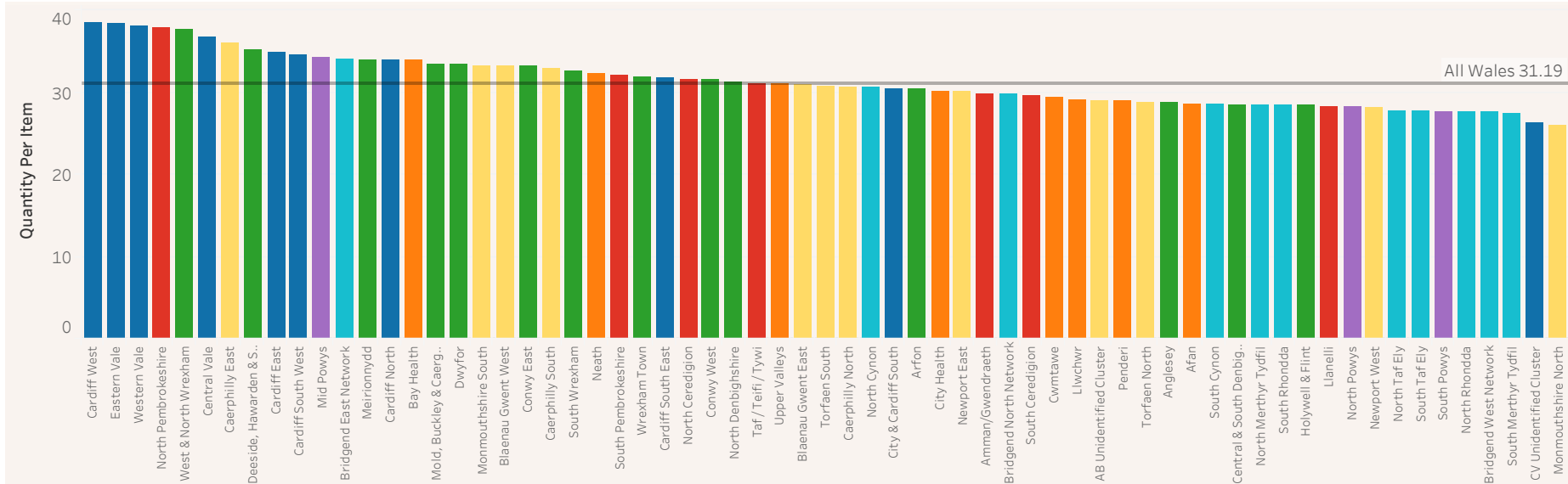
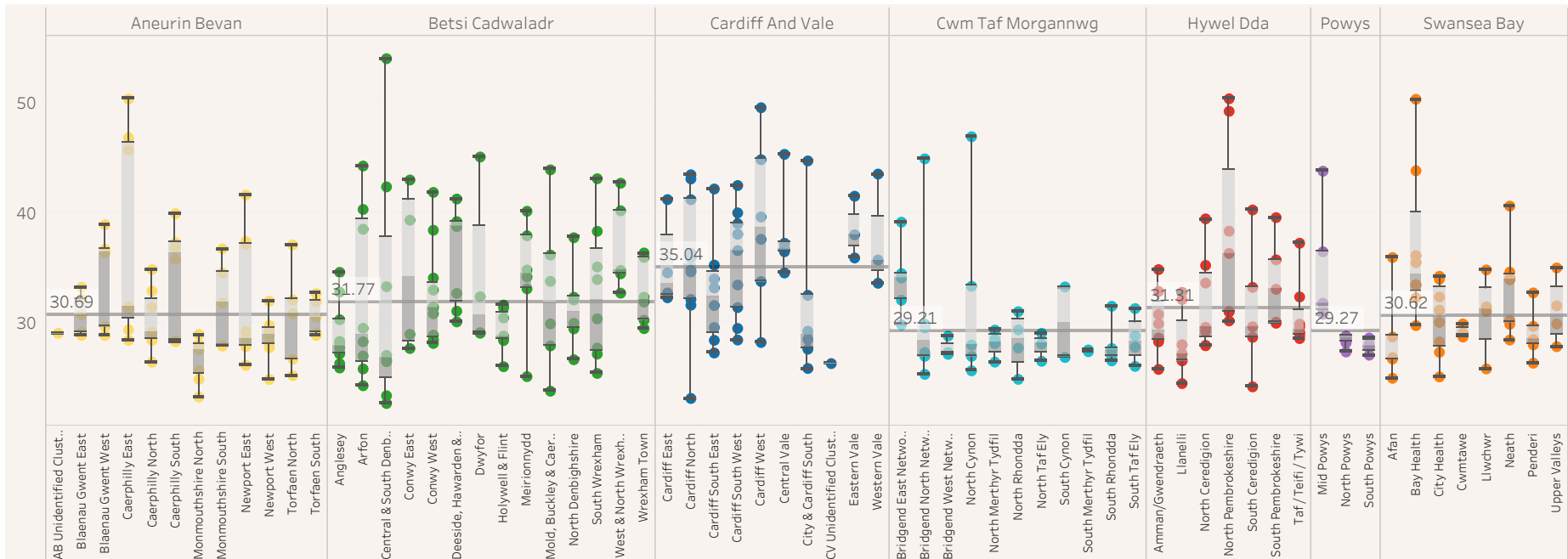


Figure 3 - Breakdown of Quantity Per Item for August 2025 by Cluster and Practice



END OF REPORT