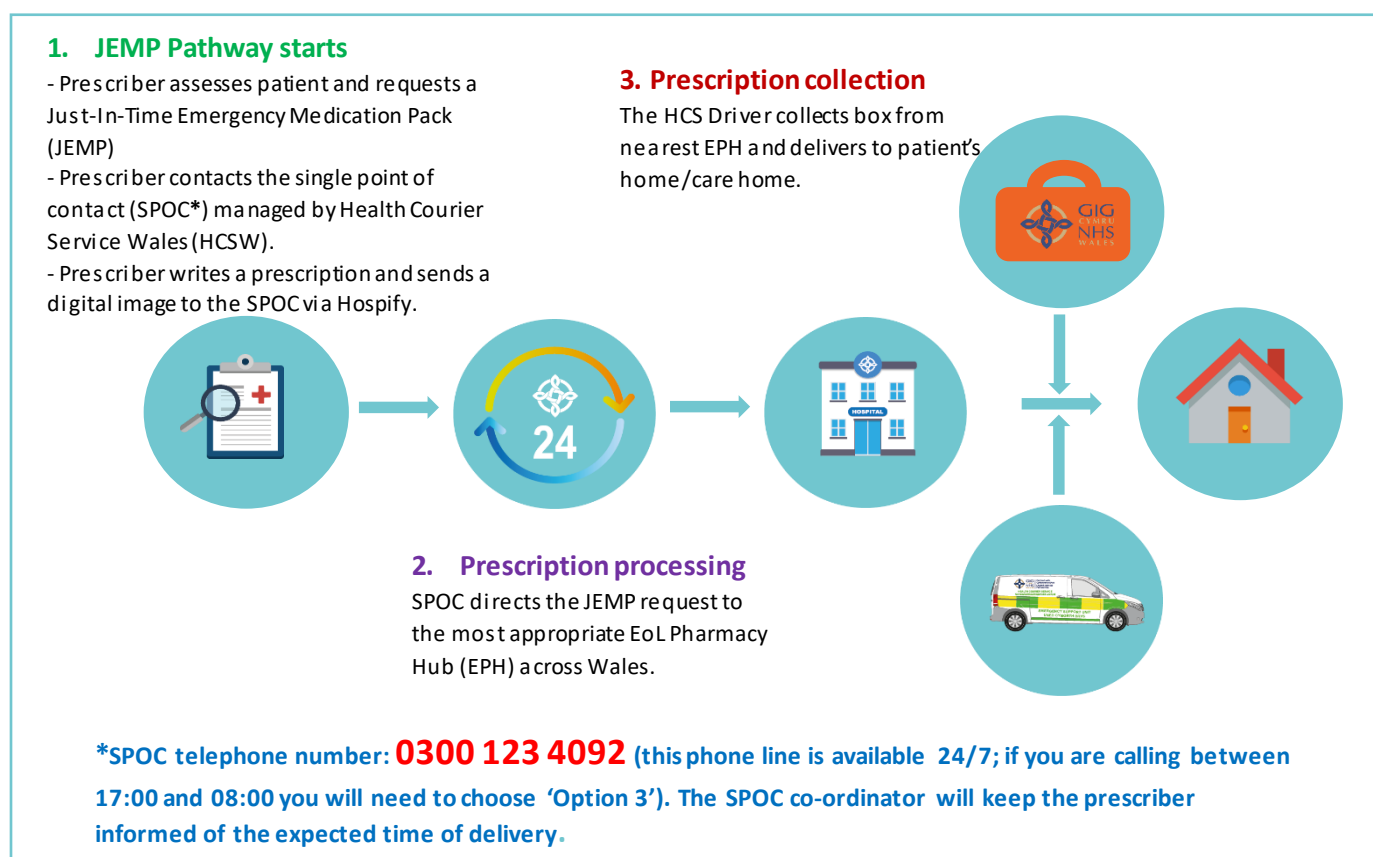


Communication release: End of Life COVID-19 Medicines Service to supply Just in Time Emergency Medicine Packs (JEMP)

Clinicians and other Healthcare Professionals are reminded of this scheme which has been in operation since the initial phase of Covid cases, which ensures patients in the community have access to an emergency supply of palliative medicines delivered direct to their home by NHS drivers. This scheme supplements any local arrangements for access to these medicines. The JEMP scheme is available in the following circumstances:

1. **Out of hours** where there is a “need” to supply irrespective of where the patient resides at that time, e.g. home address, care home, field hospital.
2. **During normal working hours** if local service provision cannot access the required medicines in a timely manner.

Details of the scheme



For more information about the scheme, please see the website link:

<https://www.awttc.org/covid-19-eol-medicines-service>

Information for Prescriber

Download and create a Hospify account in advance!



- ✓ In order to request a JEMP, clinicians should send a digital image of the prescription to the SPOC.
- ✓ Hospify is an app for sending messages and images (like an NHS WhatsApp).
- ✓ It has been designed for use by clinicians to allow encrypted messaging. NWIS have advised it meets all NHS Wales IG and GDPR requirements.
- ✓ It has to be downloaded from an app store. You have to have an NHS email to be able to register to use it. Prescribers will need to 'Add' Health Courier Service Wales to their connections before they start sending messages.
- ✓ OOH clinicians can also ask the 111 admin/ shift leads to send the prescription image in their behalf.

The contents of the JEMP



- ✓ It is not possible to tailor the contents of the JEMP as they are prepared in advance. **There can be no substitution and the quantities must be exact.** Medication not included within the JEMP cannot be supplied via the End of Life COVID-19 Medicines Service.

Medicine	Strength	Quantity
Morphine sulphate injection	10 mg/ml	10
Midazolam injection	10 mg/2 ml	10
Hyoscine hydrobromide injection	400 mcg/ml	5
Levomopromazine injection	25 mg/ml	5
Haloperidol injection	5 mg/ml	5
Water for injection	10 ml	5

Prescription requirements



- ✓ One of the most common causes of delays for patients and carers in obtaining controlled drugs is prescribers writing prescriptions that do not fulfil legal requirements. A prescription should be generated to reflect the contents of the JEMP box and must meet controlled drug prescription requirements:
 - Quantities should be prescribed in words and figures
 - Directions should include a dose, e.g. '2.5mg to be injected subcutaneously as directed' is acceptable.

An [Example Prescription](#) is shown on the AWTC website.