



Grŵp Strategaeth Meddyginiaethau Cymru Gyfan  
All Wales Medicines Strategy Group

# Building Effective Engagement

Dr Stephanie Francis

Mrs Claire Ganderton

Dr Bridget-Ann Kenny



**AWTTC**

All Wales Therapeutics & Toxicology Centre  
Canolfan Therapiwteg a Thocsicoleg Cymru Gyfan

# Effective Engagement

‘stakeholders work collaboratively  
to achieve common goals’

# Key factors for effective engagement?

---

- ✓ Engagement Strategy
  - ✓ Shared decision making
  - ✓ Good communication
  - ✓ Trust
  - ✓ Information Sharing
  - ✓ Openness and transparency
-

# Working Together

To provide people in Wales timely access  
to medicines

**'right medicine, right person, right time'**



**KEY  
INFORMATION**

Route of access in UK

Regulatory timelines

NICE timelines (if appropriate)

PAS or commercial arrangement

Place in current treatment pathway/comparator medicines

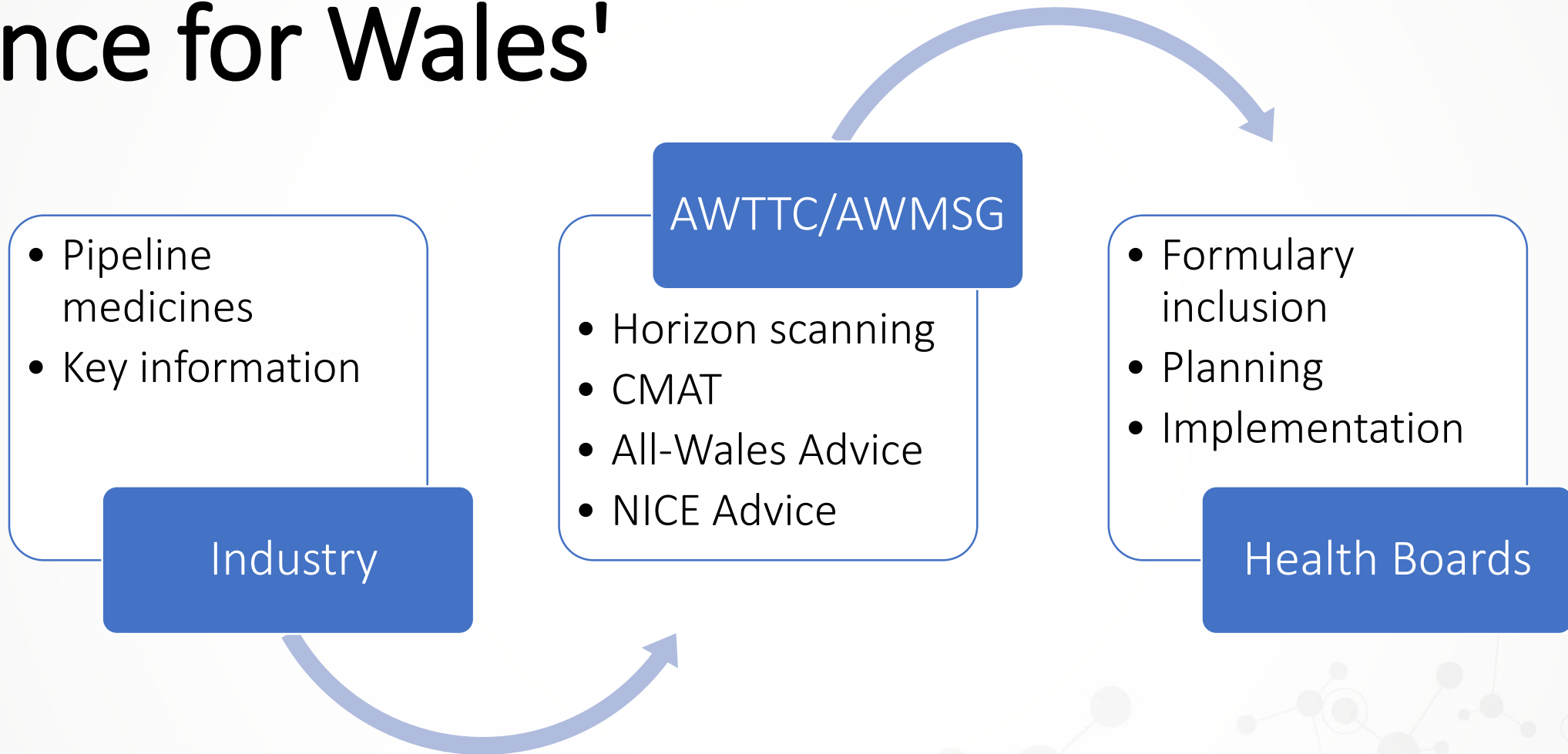
Estimated eligible patients

Unmet clinical need

Biomarker testing

Budgetary information (when available)

# Patient Access to Medicines 'Once for Wales'



# Current routes for information sharing

UK PharmaScan

Advanced budgetary  
notification

Form A

Email:  
[awttc@wales.nhs.uk](mailto:awttc@wales.nhs.uk)

# Current limitations



MHRA INFORMATION  
SHARING



FORM A



MONITORING NICE  
WORK PROGRAMME



IDENTIFYING MEDICINES  
NOT ON NICE WORK  
PROGRAMME



LIMITED SHARING OF  
BUDGETARY  
INFORMATION



# AWTTC horizon scanning



Identify medicines where All Wales advice may be required



Support financial and service planning in NHS Wales

# Horizon scanning: financial planning

Significant financial impact

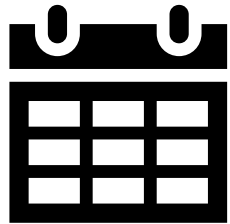
- >£1M net budget for Wales
- To consider additional thresholds on a per-patient basis and an individual health board/trust basis

# Horizon scanning: service planning

Significant service impact, e.g.

- Staff time/skillmix
- Clinic/pharmacy/bed/chair time
- Laboratory services, e.g.
  - Companion biomarker test (genomic/pathology-based)
  - Pharmacogenomic testing
- Radiology services

# Timelines



Financial – to align with health board/trust annual planning

- 12-18 months horizon

Service – to align with HTA publication

- New Treatment Fund – clock starts at FDG/FAD/FED stage

# Horizon scanning outputs



All Wales advice



Advanced Therapy Medicinal Product report



Cancer medicines report



Non-cancer medicines report



Ad hoc reports



Financial forecasting report

# Horizon scanning inputs

---



Desk work

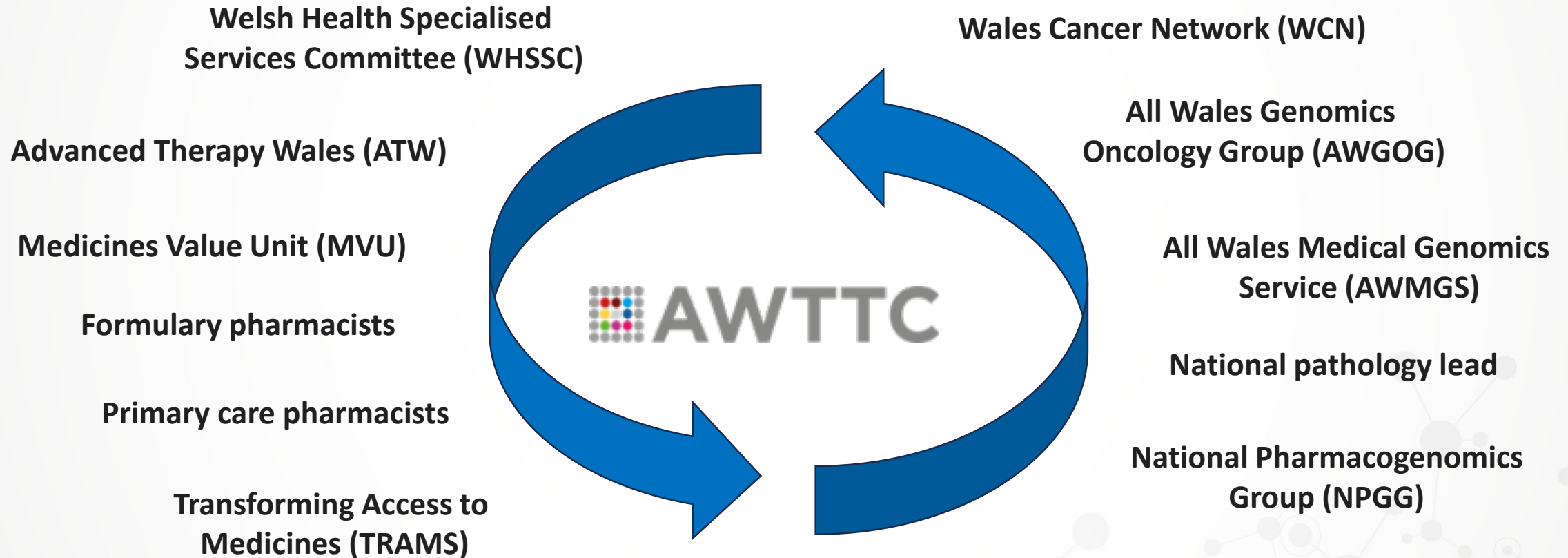


Clinician/health board engagement



Company engagement

# Building collaborative partnerships



# Company engagement (Wales)



As early as possible before  
marketing authorisation,  
acknowledging .....



Complexity of  
medicine/technology



Changing regulatory  
landscape



Limitations of data at certain  
timepoints



# Company engagement (Wales)

Regulatory  
submission?

NICE topic  
selection?

NICE scoping?

NICE evidence  
submission?

FDG/FAD/FED  
publication?

# Recent Engagement Activities

New medicine, indication or formulation: initial submission form

\* Required

MEDICINE DETAILS

5. MA holder \*

Enter your answer

6. Generic name (trade name) \*

Enter your answer

7. Formulation(s), strength(s), and route(s) of administration \*

Enter your answer

Does this medicine have a UK PharmaScan ID? \*

Yes

Testing online submission proforma for industry colleagues



Canolfan Therapiwteg a Thocsicoleg Cymru Gyfan  
All Wales Therapeutics and Toxicology Centre

AWTTC - All Wales Therapeutics & Toxicology Centre

Leading authority on therapeutics and toxicology working to create a healthier, better informed Wales.  
Hospitals and Health Care · Cardiff, Wales · 135 followers · 11-50 employees

Steph & 9 other connections follow this page

Message Following More

Home My Company About Posts Jobs People

All Images Videos Articles Documents Ads

Sort by: Top

AWTTC - All Wales Therapeutics & Toxicology Centre · Following

Hospitals and Health Care

I nodi: Wytinos Ymrybyddiaeth Gwrthficrobaidd y Byd #WAAW23 rydym yn tyngu sylw at Ganllawiau Gwrthficrobaidd Gofal Sylfaenol a gymeradwyir gan AWMSG sy'n rhoi cymgwr ar reoli heintiau cyffwrdd mewn gofal sylfaenol <https://lnkd.in/g/...> ...see more

Grŵp Strategaeth Meddyginiaethau Cymru Gyfan  
All Wales Medicines Strategy Group

Primary Care Antimicrobial Guidelines



# How AWMSG and AWTTTC are supporting sustainability for the NHS in Wales

The *Well-being of Future Generations (Wales) Act* (2015) is ground-breaking legislation that aims to ensure that future generations in Wales have at least the same quality of life as we do now. Public bodies in Wales, including the All Wales Medicines Strategy Group (AWMSG) and the All Wales Therapeutics and Toxicology Centre (AWTTTC) have a legal duty to take into account the impact that their decisions will have on future generations. AWMSG and AWTTTC have committed to a sustainability approach. AWTTTC has set up a Sustainability Group to support AWMSG in considering the act's 'sustainable development principle' in decision-making.

A report, "*AWMSG and the Well-being of Future Generations (Wales) Act*" (2022), outlines how AWMSG and AWTTTC are working to achieve the act's seven well-being goals through their well-being objectives. The report emphasises the importance of communication and collaboration with stakeholders, including the pharmaceutical industry, to reach those goals.

# Recent Engagement Activities

## How AWMSG and AWTTTC support equality, diversity and inclusion

The All Wales Medicines Strategy Group (AWMSG) and the All Wales Therapeutics and Toxicology Centre (AWTTTC) are committed to improving the safe use of medicines and ensuring that people in Wales can access cost-effective medicines when they need them.

AWMSG and AWTTTC also work to achieve the goals of the Well-Being of Future Generations Act and follow the Act's five ways of working: leadership, inclusion, integration, innovation, and involvement. AWTTTC is committed to equality, diversity, and inclusion in its work, and must also make sure that its services reflect the diversity of the area they serve.

AWMSG and AWTTTC aim to reduce health inequalities and support inclusion by:

- ensuring the AWTTTC website is accessible
- holding virtual meetings of our Sustainability Group
- completing equality and health inequality work
- publishing AWTTTC's work in Wales and being commended for their high-quality standards
- producing patient information in easy-read formats

# We need your help.....

Engage with [@AWTTC - All Wales Therapeutics & Toxicology Centre](#) on LinkedIn

Register with  **UK PharmaScan**

Keep AWTTC informed of new pipeline medicines

Come and talk with the team about how we can improve our engagement with industry

Feedback and test our company pro-forma



Medicines  
access



Medicines  
value unit



National prescribing  
indicators

## Mini Networking Sessions



Medicines  
Optimisation



Horizon  
scanning



Company  
engagement

Diolch yn fawr  
Thank you

<https://awttc.nhs.wales>

<https://cttcg.gig.cymru>

[@AWTTCcomms](#)

[@AWTTCcymraeg](#)



**@AWTTC - All Wales Therapeutics & Toxicology Centre**